

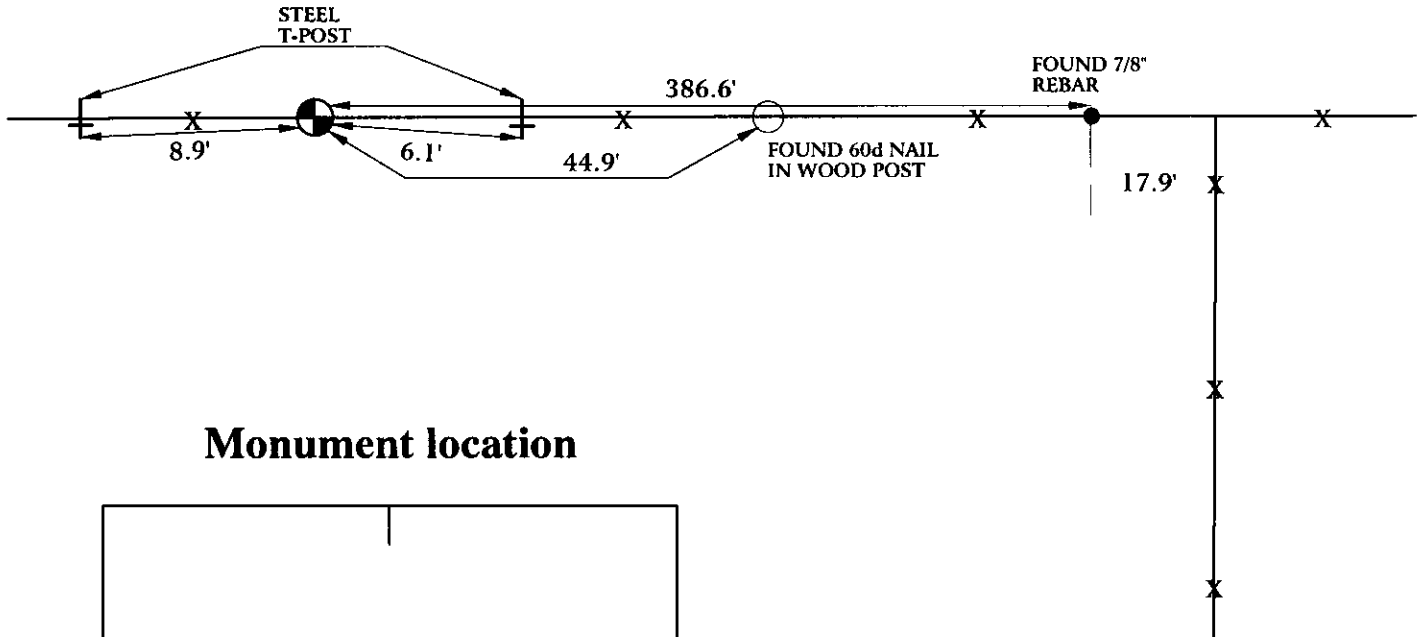
# State of Wyoming Corner Record

(In compliance with the CORNER PERPETUATION AND FILING ACT, Wyoming Statutes, 1997 Section 33-29-140 et. seq., and the Rules and Regulations of the Board of Professional Engineers and Professional Land Surveyors)

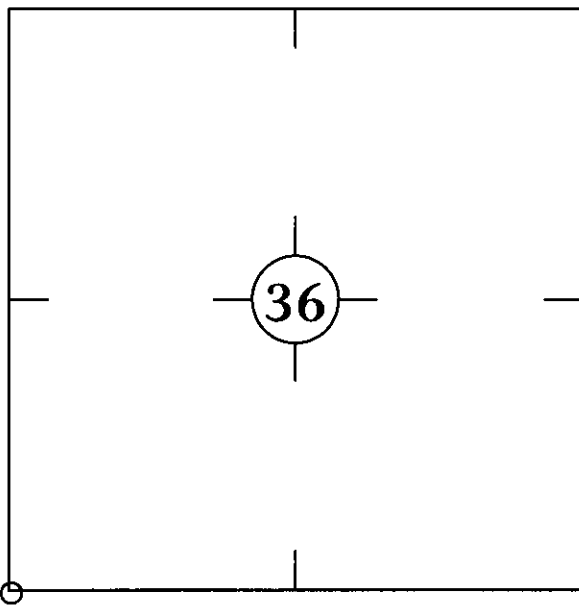
Reverse side of this form may be used if more space is needed.

Record of original survey and citation of source of historical information (if corner is lost or obliterated). Description of corner monumentation evidence found and/or monument and accessories established to perpetuate the location of this corner. Sketch of relative location of monument, accessories, and reference points with course and distance to adjacent corner(s) (if determined in this survey). Method and rationale for reestablishment of lost or obliterated corner.

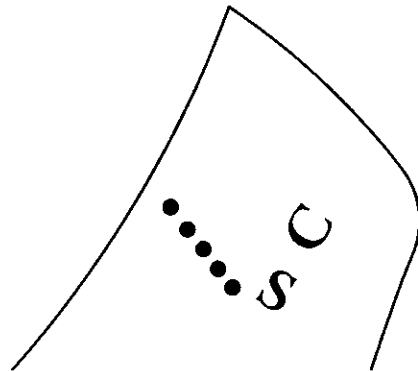
FOUND 22" X 16" X 9" STONE IN BURIED MOUND OF STONES IN EAST-WEST FENCE LINE WITH SC AND FIVE NOTCHES ON WEST FACE AND ONE NOTCH ON EAST FACE.



## Monument location



## Monument Inscription



WEST FACE OF  
22" X 16" X 9" STONE

Date of Field Work: 10/21/04

Office Reference: AW04-8634

## Cross Index Plat

1	2	3	4	5	6	7	8	9	10	11	12	13	14	15	16	17	18	19	20	21	22	23	24	25	
A																									A
B																									B
C	6	5	4	3	2	1																			C
D																									D
E																									E
F																									F
G	7	8	9	10	11	12																			G
H																									H
J																									J
K																									K
L	18	17	16	15	14	13																			L
M																									M
N																									N
O																									O
P	19	20	21	22	23	24																			P
Q																									Q
R																									R
S																									S
T	30	29	28	27	26	25																			T
U																									U
V																									V
W																									W
X	31	32	33	34	35	36																			X
Y																									Y
Z																									Z
	1	2	3	4	5	6	7	8	9	10	11	12	13	14	15	16	17	18	19	20	21	22	23	24	25

Firm/Agency, Address  
 CHARLES H. RUSSELL P.L.S. 6099  
 AMERICAN WEST LAND SURVEYING CO.  
 29 SOUTH 4TH AVENUE  
 BRIGHTON, CO 80601

This corner record was prepared  
 by me or under my direction  
 and supervision.

SEAL & SIGNATURE

Telephone Number:  
 303-659-1532



RECORDED 2/17/2005 AT 1:52 PM REC# 409612 BK# 1865 PG# 152  
 DEBRA K. LATHROP, CLERK OF LARAMIE COUNTY, WY PAGE 1 OF 1

Corner Name: Southwest Corner, Section 36, T 13 N, R 70 W, 6th P.M.

Cross-Index No.: Z-21

County: Laramie